



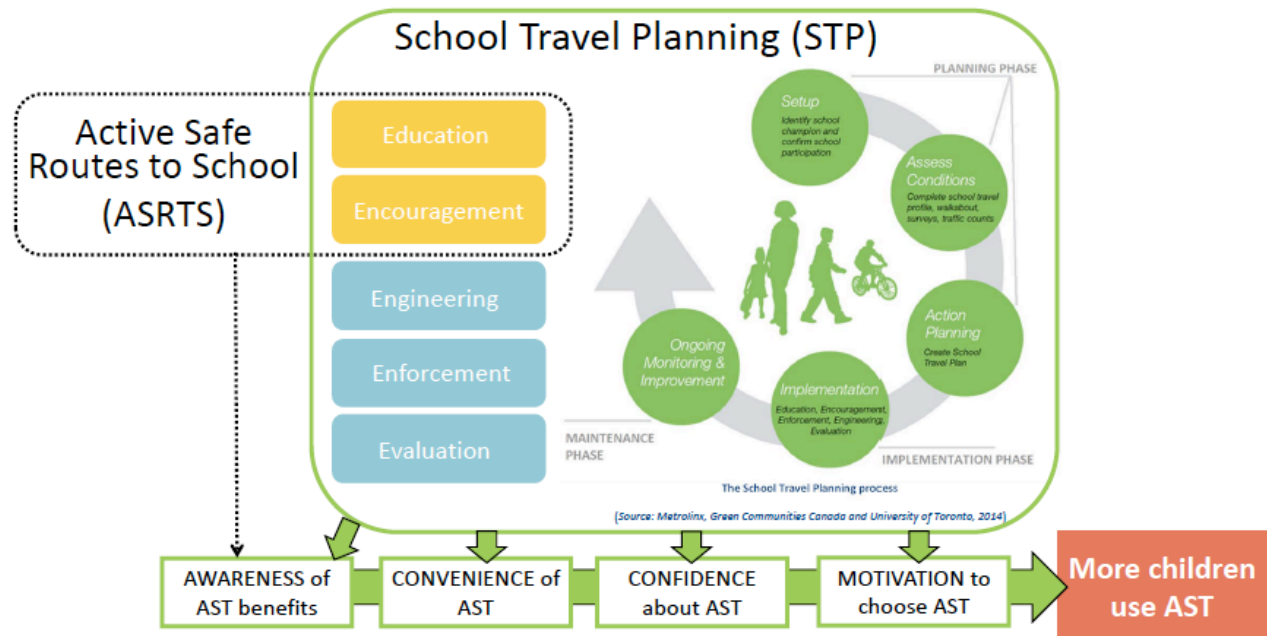
## Lawrence Grassi Middle School School Travel Plan Executive Summary

In September 2016 the Canmore Community Cruisers launched a pilot **School Travel Planning** project with Lawrence Grassi Middle School (LGMS), with a \$5,000 grant from the Alberta Traffic Safety Fund (ATSF) and a \$2500 contribution from the Town of Canmore.

Across Canada, rates of walking and cycling to school have reached all time lows, as it has become the norm for parents to drive their children to school. This contributes to low levels of physical activity for students, lack of independent mobility, poor local air quality and traffic congestion in the immediate vicinity of the school that often leads to unsafe conditions for those not in a vehicle.

Using the Canada Walks tried and tested School Travel Planning model, the pilot underway at Lawrence Grassi Middle School collected data from classroom surveys, family surveys, traffic observations/counts and a walkabout and bike-about of the school neighbourhood. The wealth of data collected allowed us to develop a detailed and extensive action plan to improve the active school journey.

### Active School Travel (AST)





A Municipal Stakeholder Committee was formed at the outset of the project, to involve various decision makers that can work together on education, encouragement, engineering, enforcement, and evaluation activities that will address active school travel issues and improve the journey to school. The committee includes the school principal, the facilities manager for Canadian Rockies Public School, municipal staff from the engineering department and by-law, representatives from the Bow Valley Primary Care Network, the Biosphere Institute of the Bow Valley and the RCMP, chaired by the School Travel Planning Facilitator that was hired for the project.

Committee members were ecstatic to discover that between 30 – 40% of LGMS students bike to school. The Canadian average is 2%. Many of these students are committed to biking all winter, no matter what mother nature throws at them! A further 10 – 14 % walk or roll to school. But the journey on foot or on wheels is not without its challenges. Barriers and concerns that limit walking, biking and rolling to school were uncovered in reviewing 208 family surveys that were completed by students and parents.

Based on the Baseline Classroom and Family Survey findings, this community's key objectives in order to assist the health and well-being of LGMS students and families are:

1. Reduce speed limits and reduce speeding around the school and along routes to school
2. Identify and promote preferred routes to school
3. Improve student safe cycling skills
4. Improve the visibility of students walking and wheeling to school in low-light conditions
5. Improve the behavior of drivers and students at crosswalks
6. Improve infrastructure along key routes to school
7. Increase school community familiarity and support for the Town of Canmore Integrated Transportation Plan
8. Reduce number of cars dropping off students in the immediate vicinity of the school



9. Strengthen commitment of Town Council for supporting safe routes to school
10. Promote walking and wheeling to school
11. Celebrate successes

As a result of the data collection, a detailed, six-page action plan was drafted as for inclusion in the school travel plan. Engineering improvements received \$100,000 in funding for 2017 and \$100,000 in for 2018 in the Town of Canmore capital budget. The priorities are:

Priority 1: Improvements to the Spring Creek Roundabout

Priority 2: 7<sup>th</sup> Ave improvements to the crosswalk and to address speeding

Priority 3: Bridge Rd. improvements: the crosswalks at North Rundle Cres & Rundle Dr.

Priority 4: Additions to and improvement of bike parking at LGMS

Priority 5: Bike/pedestrian Priority improvements for 4<sup>th</sup>, 5<sup>th</sup>, and 6<sup>th</sup> Streets

Priority 6: Open gates at Centennial Park bus loop

Priority 7: Speeding in lane north of LGMS

Improve Route from Teepee Town (make 2<sup>nd</sup> St a bike/pedestrian priority street) – incorporated in Bow Valley Trail/hospital crossing improvement scheduled for spring of 2017

Separated bike lane along Spring Creek Drive – incorporated in Spring Creek Drive improvement scheduled for spring of 2017.

The full LGMS School Travel Plan can be viewed on the Canmore Community Cruisers website.



canmore community cruisers

[communitycruisers.ca](http://communitycruisers.ca)